

Hubble
Bisbee

CHRISTIE'S
INTERNATIONAL REAL ESTATE



KESWICK

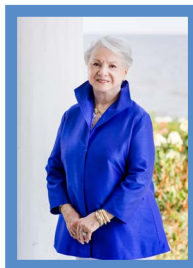
4408 SEDGWICK ROAD



LOCATIONS

2330 W Joppa Road, Suite 104
Lutherville, MD 21093

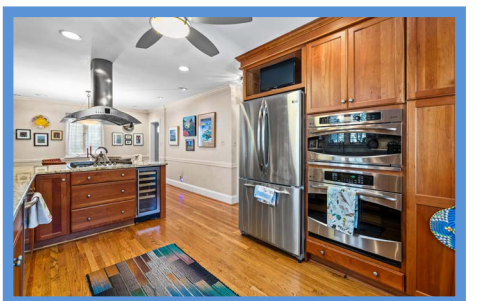
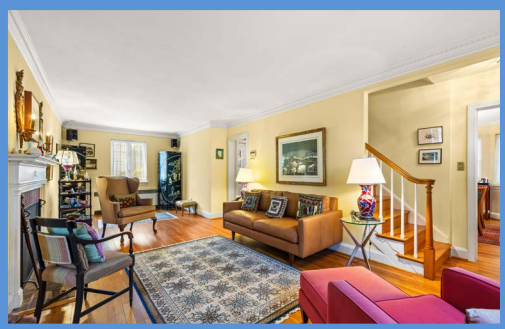
181 Harry S Truman Pkwy Ste 200
Annapolis, MD 21401



NANCY HUBBLE

Broker of Record, ABR, GRI
Nancy@HubbleBisbee.com
443-465-1424 (Mobile)
410-321-1411 (Office)

WWW.HUBBLEBISBEE.COM | (410) 321-1411 (OFFICE) | 





FOYER

- Paneled entry door with 4 arched upper windows
- Hardwood flooring
- Open oak staircase with hardwood handrails
- Beveled glass ceiling light
- Cased portal to Dining Room
- Open flow to Living Room

LIVING ROOM

- Hardwood flooring
- Woodburning fireplace with Colonial mantel, brick surround and hearth
- Two windows
- Dentil crown molding
- Two mirror-back double wall sconce lights
- Cased portal to passage to Kitchen with access to full Bath and staircase to Lower Level
- Cased portal to Office

OFFICE

- Hardwood flooring
- Two windows
- Built-in bookcase and adjacent storage closet
- Ceiling fan with light

DINING ROOM

- Hardwood flooring
- Walk-in bay window and additional window
- Crown molding
- Chair rail
- Recessed lighting
- Open flow to Kitchen
- Chandelier excluded

KITCHEN

- Hardwood flooring
- Recess-paneled cherry cabinetry including peninsula/breakfast bar, pantry cabinets, glass-door cabinets, pot-pan drawers, lazy-Susan base cabinet, roll-out trays, tray cabinet, pull-out trash/recycle bins, TV cabinet, dovetailed drawers, soft-close cabinets/drawers and matching crown trim
- Granite counters
- GE Profile stainless steel French door refrigerator
- GE Profile stainless steel 5-burner gas cooktop
- GE Monogram stainless steel and glass range hood with lighting
- GE Profile stainless steel wall oven
- GE Profile stainless steel built-in microwave/convection oven

- GE Profile stainless steel dishwasher
- Oversize stainless steel undermount sink with basin rack and Insinkerator disposal
- Window
- Exit door to Deck with 6-pane window
- Recessed lighting
- Glass globe pendant light
- Under-cabinet lighting?
- Ceiling fan with light

BATH

- Stone finish ceramic tile floor and shower stall walls with borders
- Pedestal sink with overhead lighting
- Shower stall with built-in bench, corner shelves, recessed light and sliding glass doors
- American standard flush
- Frosted glass window

UPPER LEVEL

HALL

- Hardwood flooring
- Beveled glass ceiling light
- Linen closet

PRIMARY BEDROOM

- Hardwood flooring
- Three windows- 1 in dormer recess
- Door with 12-pane window to roof deck
- Custom fitted double closet
- Built-in bookcase
- Two brass wall sconce lights with shades
- Built-in ceiling speakers
- Ceiling fan

BEDROOM 2

- Hardwood flooring
- Two windows- 1 in dormer recess
- Closet
- Built-in bookcase
- Ceiling fan with light

BEDROOM 3

- Hardwood flooring
- Two windows
- Closet
- Ceiling fan with light

HALL BATH

- Black/white basketweave pattern ceramic tile floor
- Ceramic tile wainscot and tub surround with black trim
- Pedestal sink with mirrored medicine cabinet

- and overhead lighting
- Tub/shower combination with recessed light
- American Standard flush
- Window
- Ceiling attic access panel

LOWER LEVEL

FAMILY ROOM

- Vinyl tile flooring
- Knotty pine paneled walls with painted stone feature walls
- Two transom windows
- Exit door with 6-pane window
- Walk-in storage closet
- Shelved storage closets
- Under-stair storage closet
- Recessed lighting
- Wall mount shelving above whole-house audio shelf
- Sony wall mounted TV with Sonos sound bar

UTILITY/LAUNDRY ROOM

- Unfinished
- Utica Boilers, state-of-the-art wall mounted gas-fired boiler (2025) for heating and hot water supply
- Two transom windows
- Maytag Centennial washer and dryer
- Double utility sink
- Storage wardrobe
- Work bench

EXTERIOR

- Brick Cape Cod with siding
- Replaced windows
- Slate roof
- Curved brick steps and porch at main entry
- Wood deck with wood railings and double-gated stairs to patio
- Bluestone patio with stone garden walls and steps to raised rear garden
- Detached 2-car garage with automatic door opener and alley access
- Great Roland Park location with a quick easy stroll to shops, restaurants and parks- close to the BMA, Union Memorial MedStar as well as Loyola, Notre Dame and Johns Hopkins Universities

All information contained herein deemed reliable but not guaranteed by the Broker

